

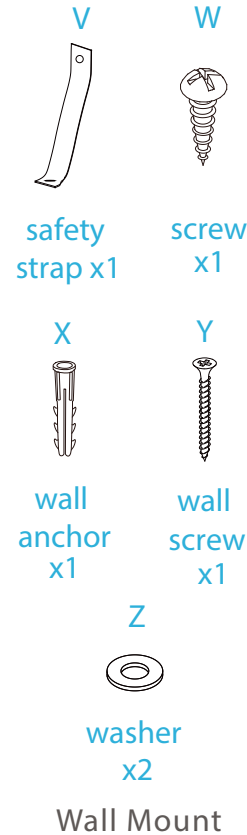
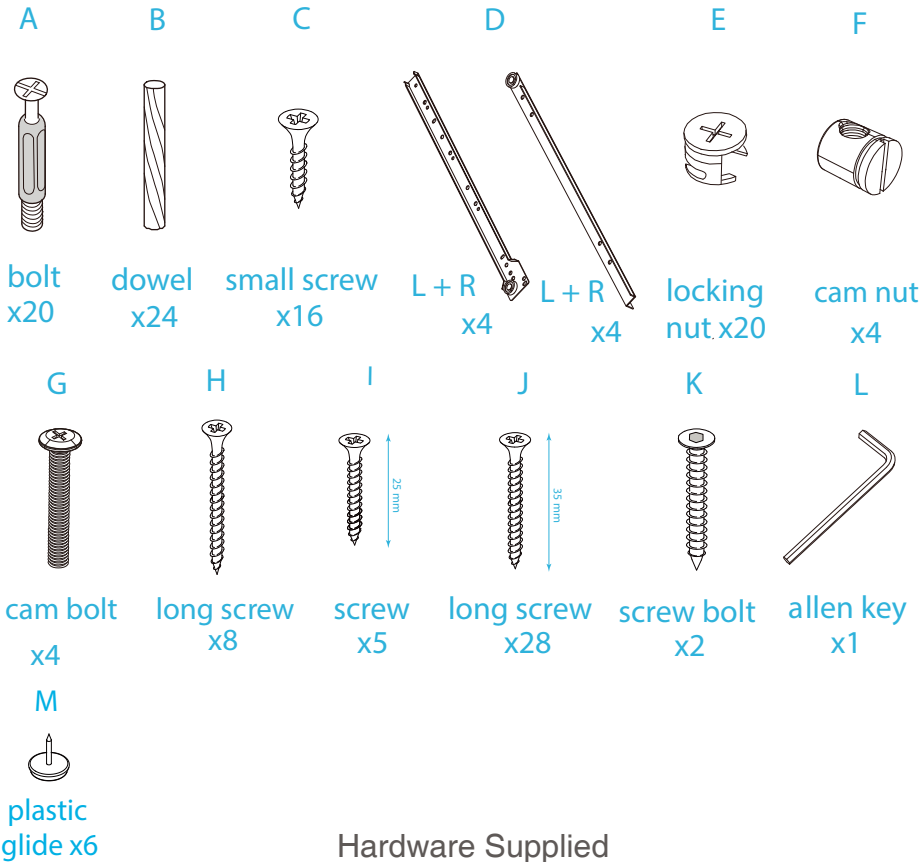
# Jesse Entertainment Unit

## Assembly Instructions

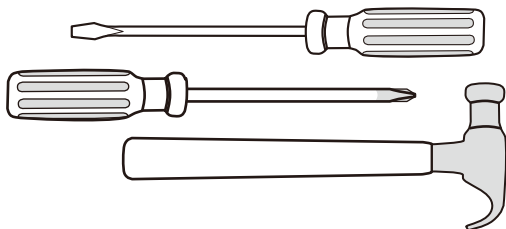
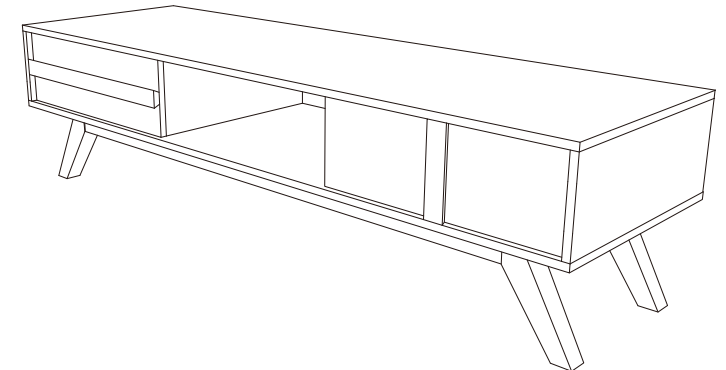
Thank you for your purchase.

Please follow the instructions below for correct assembly.

# mocka



**WARNING:** Any furniture that is not anchored to a wall has the potential to tip over in certain circumstances, i.e. if a child attempts to climb up on the furniture or in the event of an earthquake. Accordingly, we recommend that all furniture is anchored to a wall. We supply a free safety wall anchor with all furniture sold and we recommend these are used to prevent your product tipping. The fixing device provided should fit most wall types, but please note that different wall materials may require different fixing devices from those supplied.



Phillips & Flathead screwdrivers  
and hammer required

For quicker assembly, we recommend the  
use of a power drill on a low-speed setting.

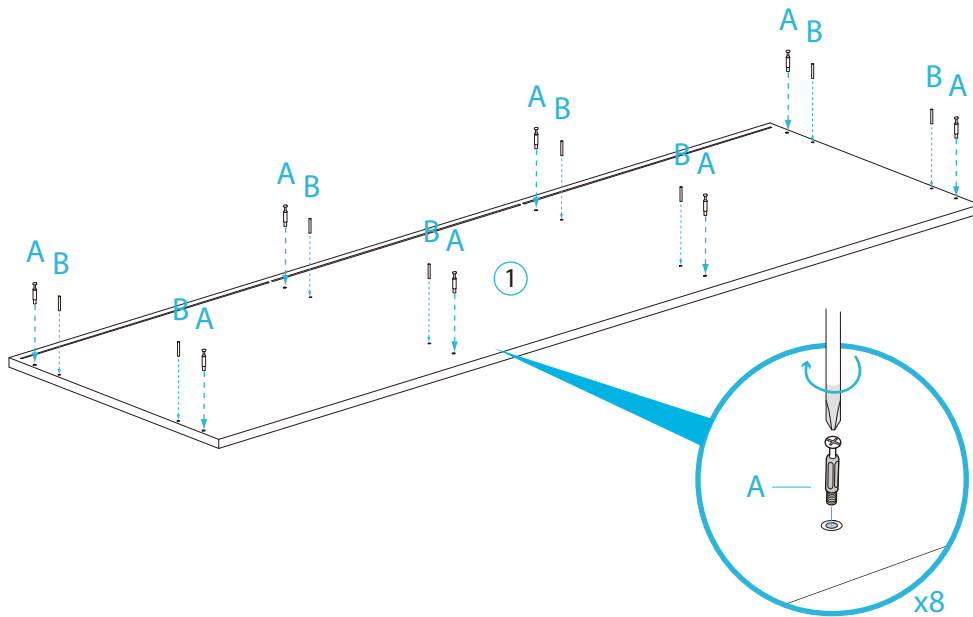
\*We recommend using a Flathead screwdriver to tighten  
all locking nuts 100% before first use.

Please clear any loose wood from the locking nut holes  
before inserting the nut to ensure it locks 100%.

# Jesse Entertainment Unit

## Assembly Instructions

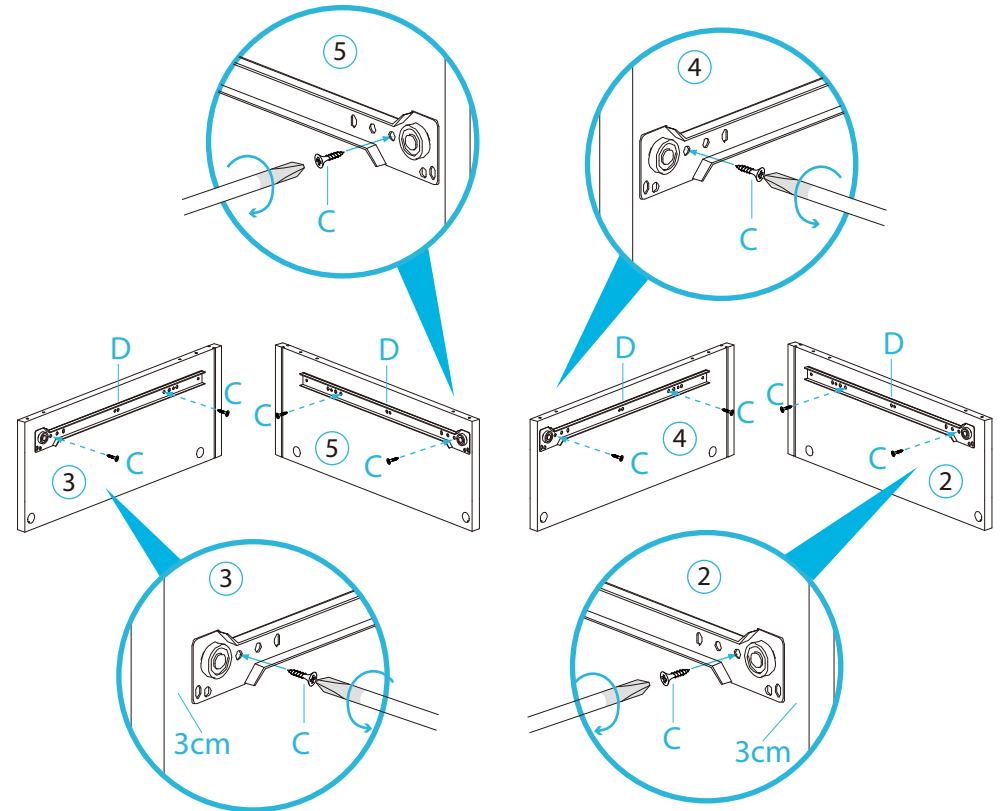
1



To begin assembly, screw 8x bolts (A) and insert 8x wooden dowels (B) into the table base panel [1].

mocka

2



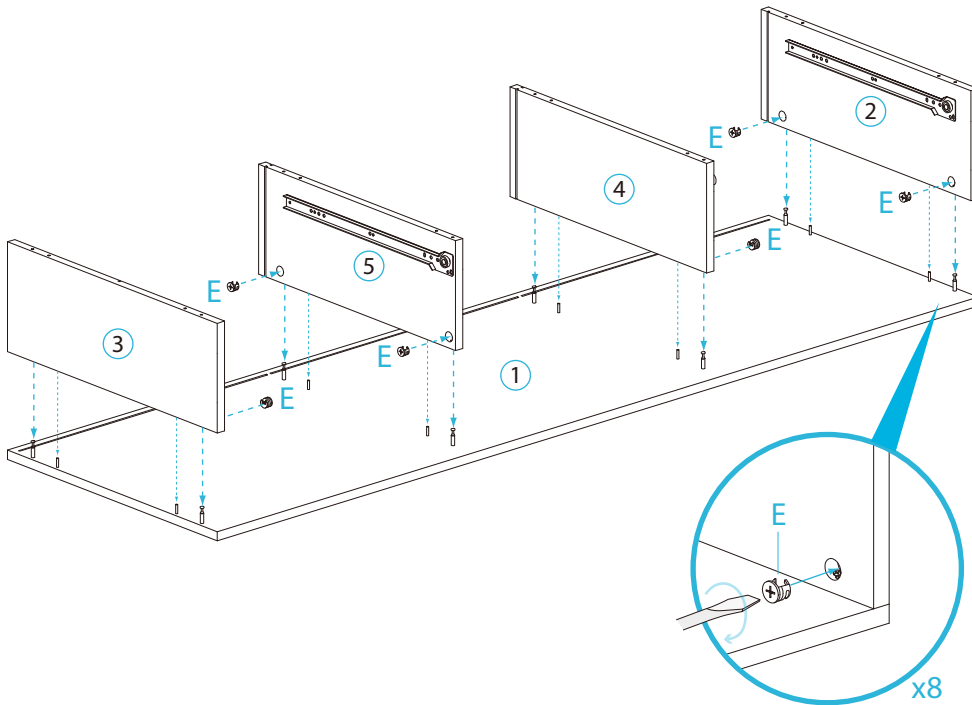
Next attach 4x rail components (D) to the inside of panels [2], [3], [4] & [5] using 2x screws (C) in each and the holes provided.

# Jesse Entertainment Unit

## Assembly Instructions

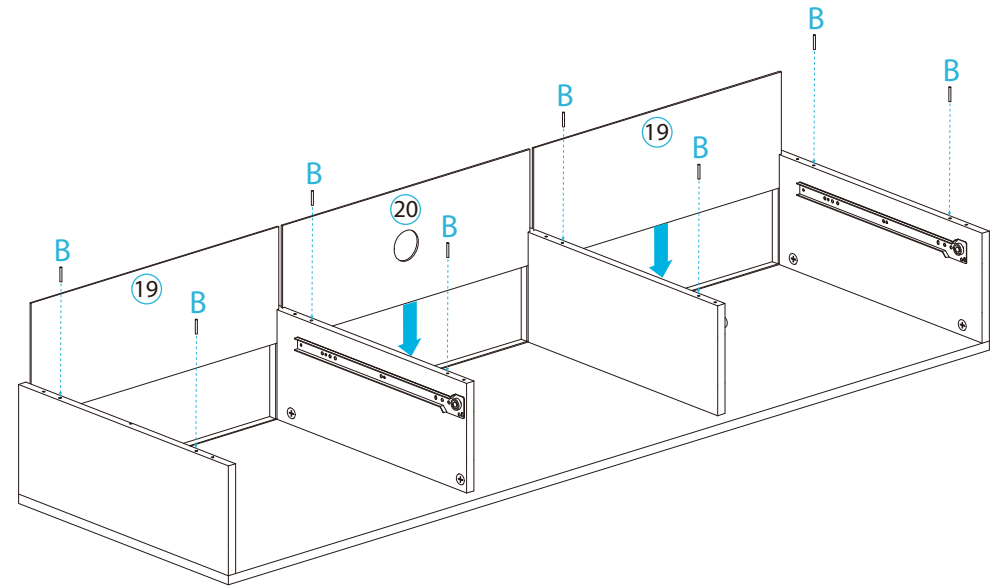
mocka

3



Slot panels [2], [4], [5] and [3] together with panel [1]. Place 8x locking nuts (E) into holes in the vertical panels and tighten with a flathead screwdriver.

4



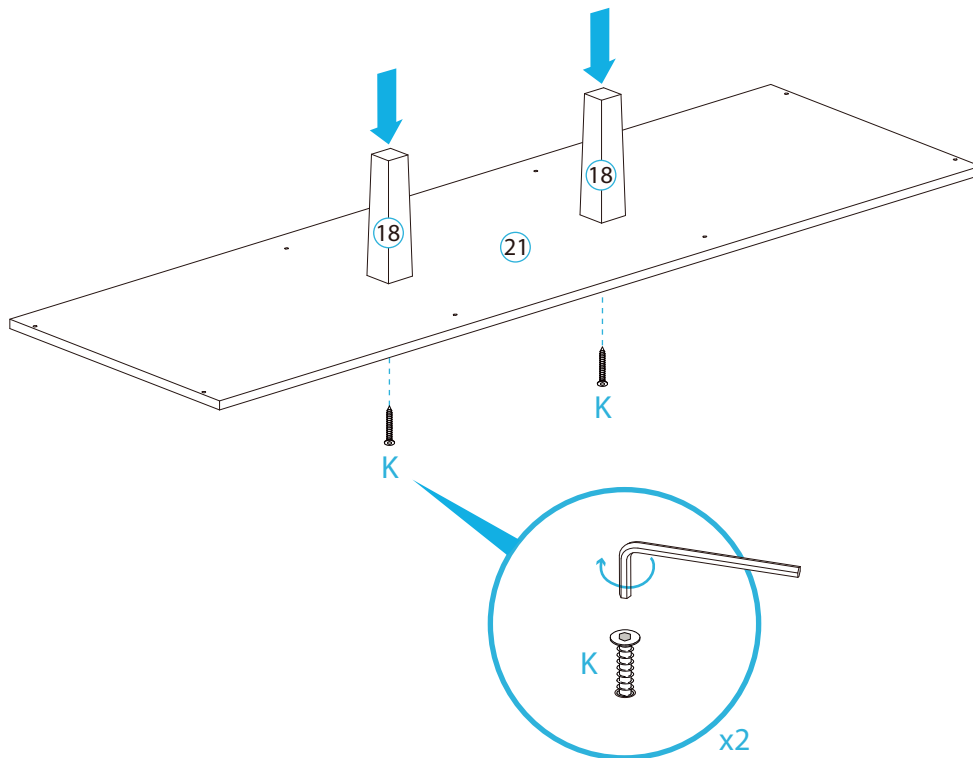
Slide the divider panels [19] and [20] down into place in the grooves in panels [2], [4], [5] and [3] as shown. Insert 8x dowels (B) into the top of panels [2], [3], [4] and [5].

# Jesse Entertainment Unit

## Assembly Instructions

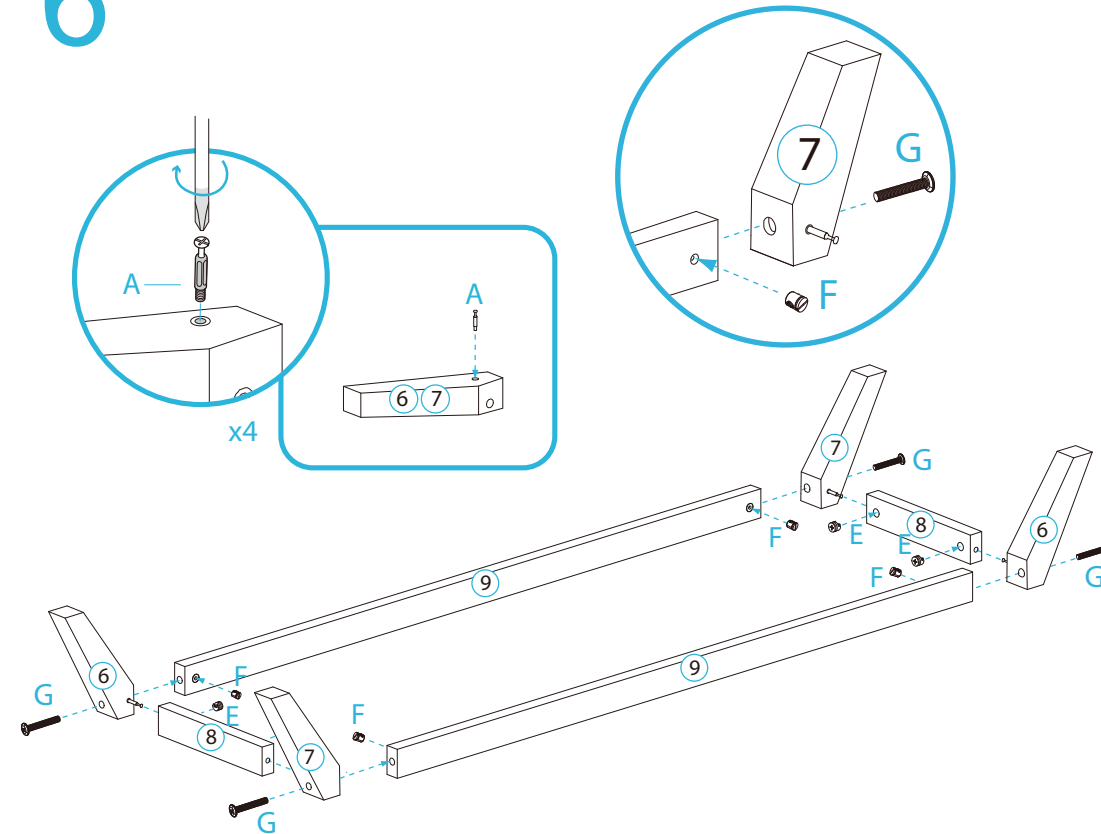
mocka

5



Attach the two central legs [18] to the base panel [21] using 2x screw bolts (K) through the underside and tighten with allen key (L) provided.

6



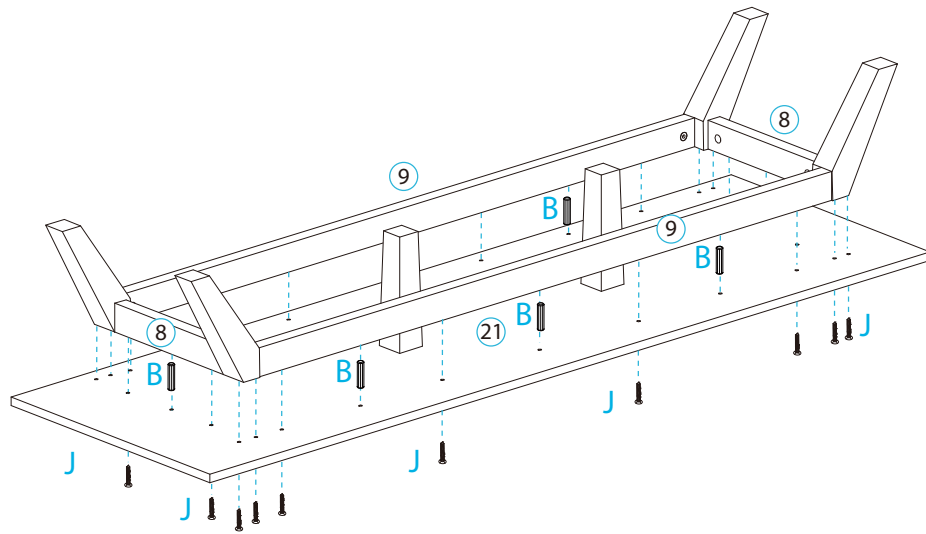
To assemble the base insert 4x bolts (A) and 4x cam bolts (G) into the legs [6] & [7]. Connect all components together using 4x locking nuts (E) and 4x cam nuts (F). Tighten with a screwdriver.

# Jesse Entertainment Unit

## Assembly Instructions

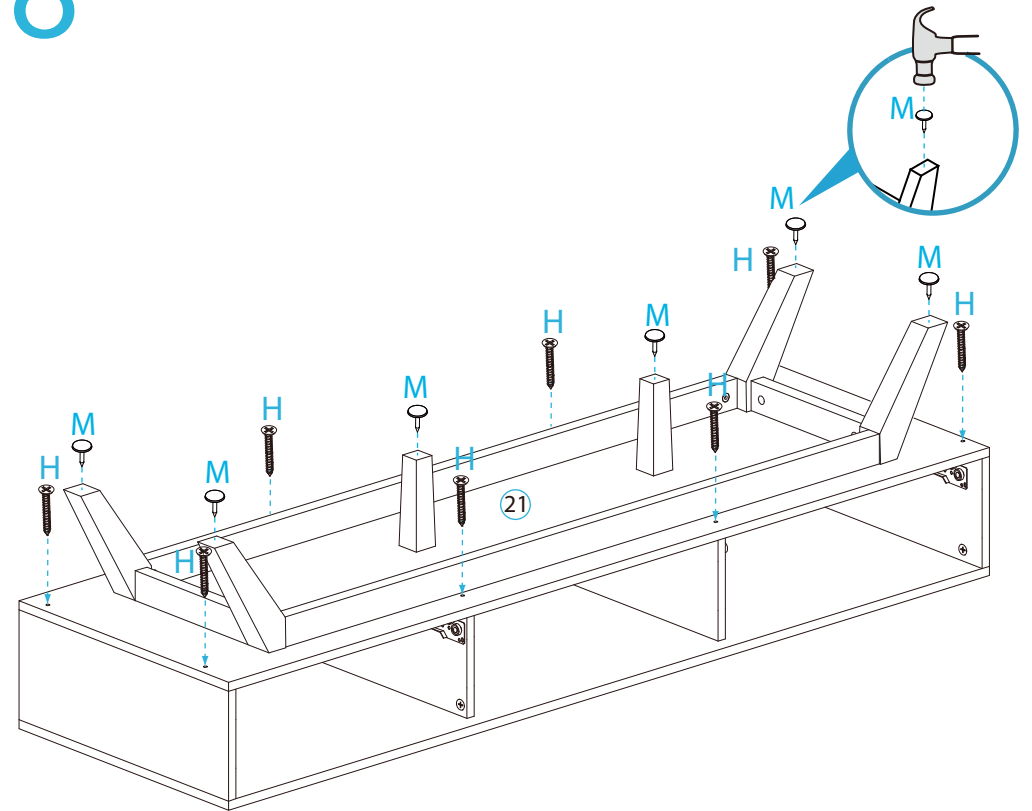
mocka

7



Attach panel [21] to leg panels with 8x dowels (B) and secure with 20x screws (J). Tighten with a screwdriver.

8



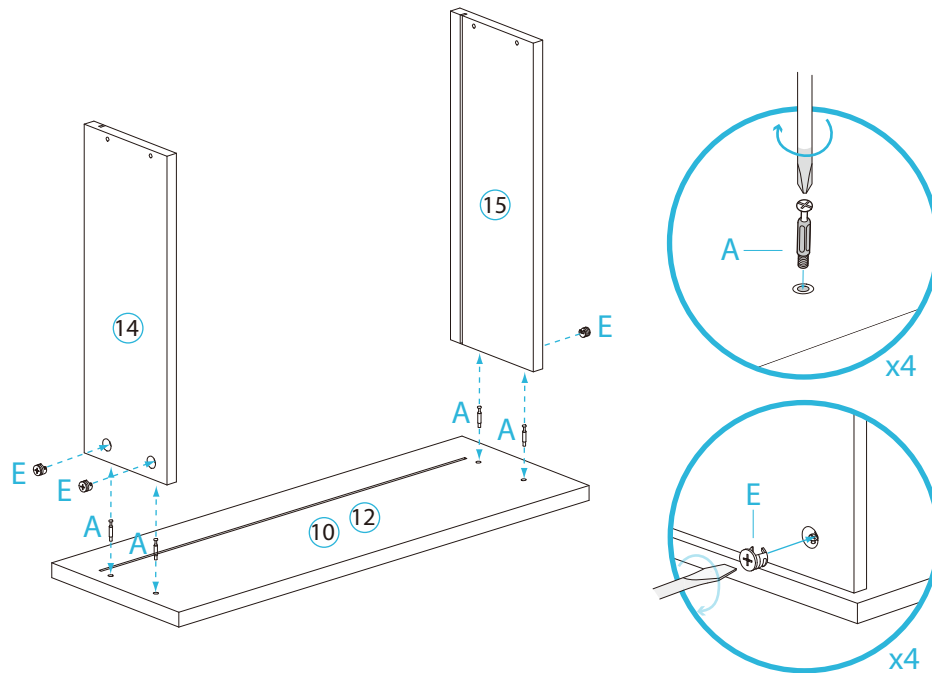
Attach the base panel [21] to the rest of the unit by inserting 8x long screws (H) and tighten with a screwdriver. Attach 6x plastic glides (M) into the panels with a hammer as shown.

# Jesse Entertainment Unit

## Assembly Instructions

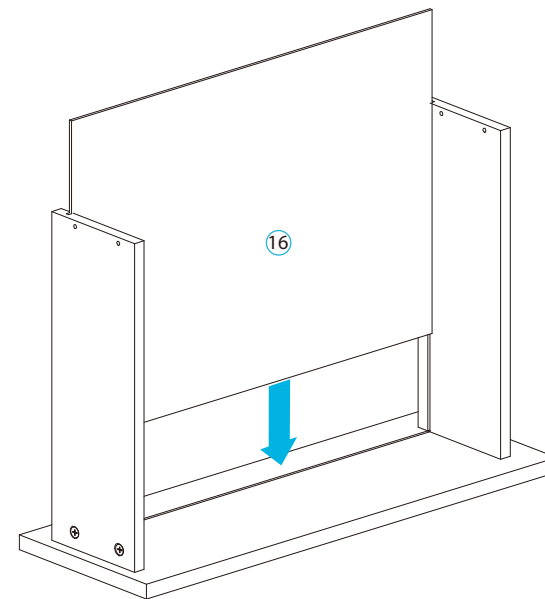
mocka

### 9 Drawers x2



To assemble the drawers screw 4x locking bolts (A) into holes in the front panel [10] or [12]. Attach side panels [14] and [15] to front panel by inserting 4x locking nuts (E) into holes in the side panels and tighten with a flathead screwdriver.

### 10 Drawers x2



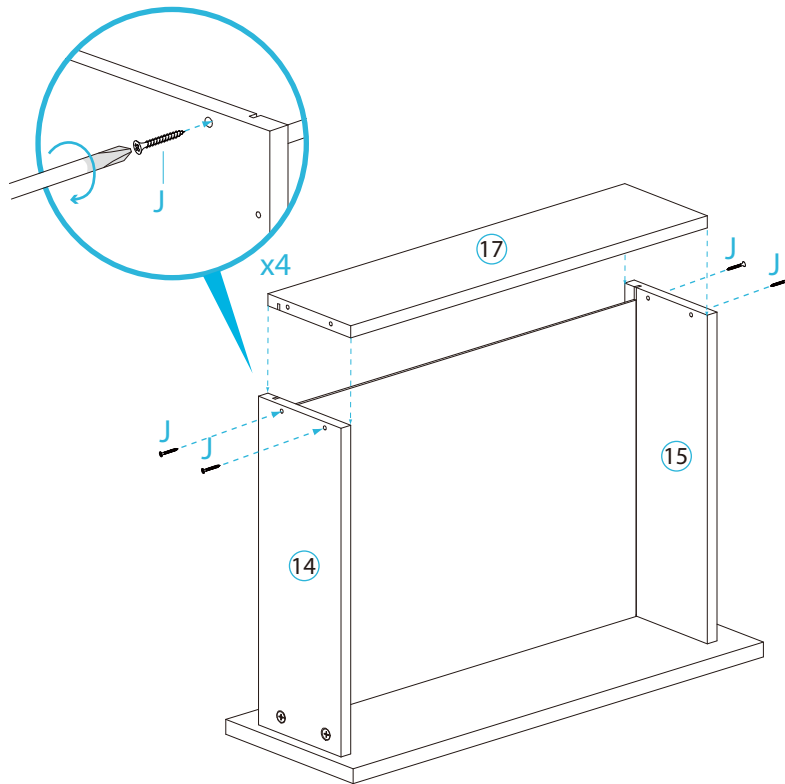
Slide the base panel [16] into place in the grooves in side and front panels as shown.

# Jesse Entertainment Unit

## Assembly Instructions

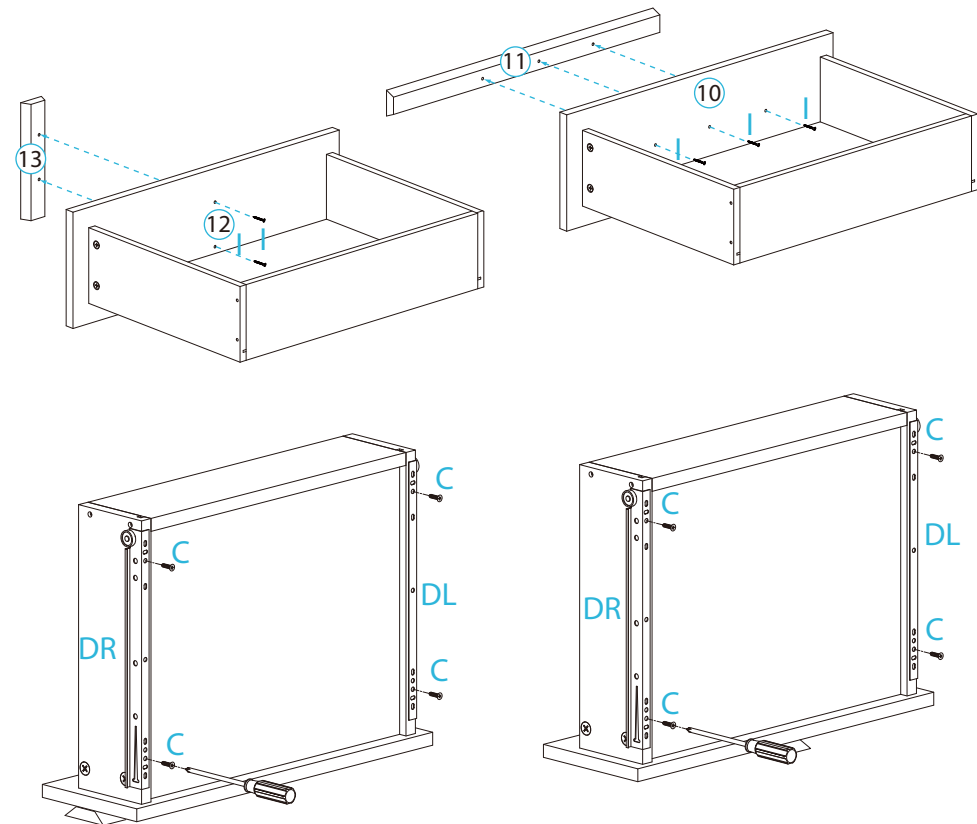
mocka

### 11 Drawers x2



Attach the back panel [17] in place between the side panels [14] and [15] using 4x long screws (J) in the holes provided and a screwdriver. Repeat step for the second drawer.

### 12 Drawers x2



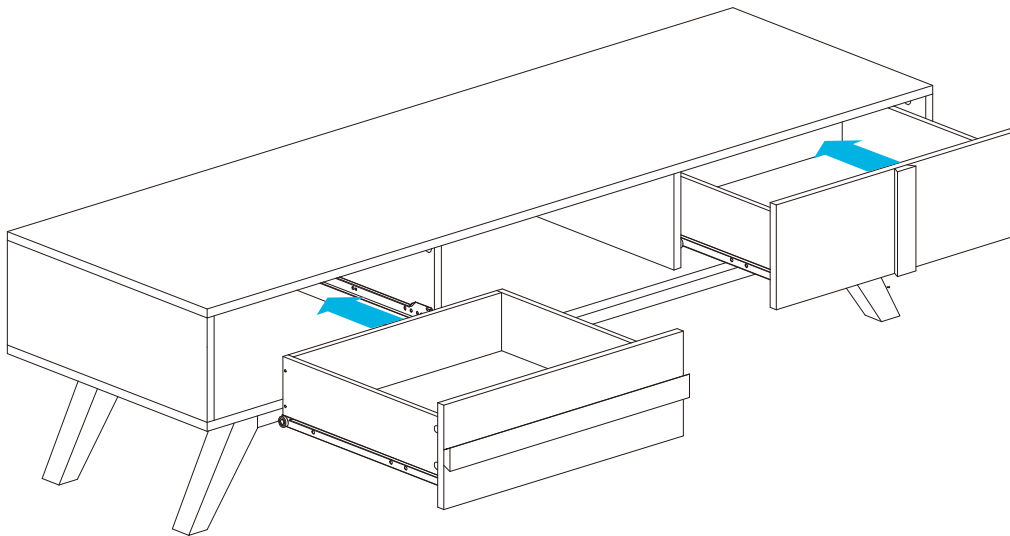
Attach handles [11] & [13] to the corresponding front panels [10] & [12] using 5x screws (I). Attach 2x rail components (D) to both left and right side of each drawer using 4x screws (C).

# Jesse Entertainment Unit

## Assembly Instructions

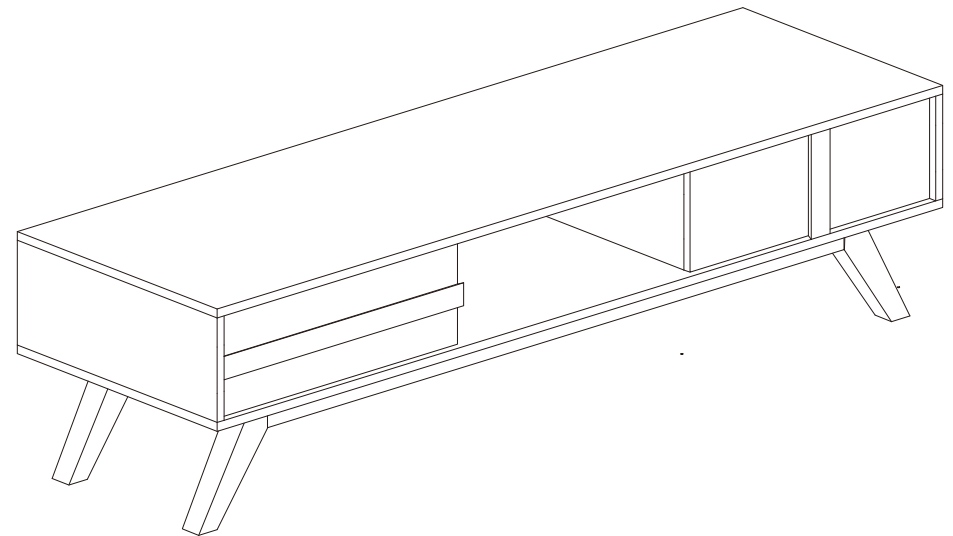
mocka

13



Flip the side board unit over onto its legs. To complete the assembly slide both completed drawers into place on the rails in the side board unit as shown.

14



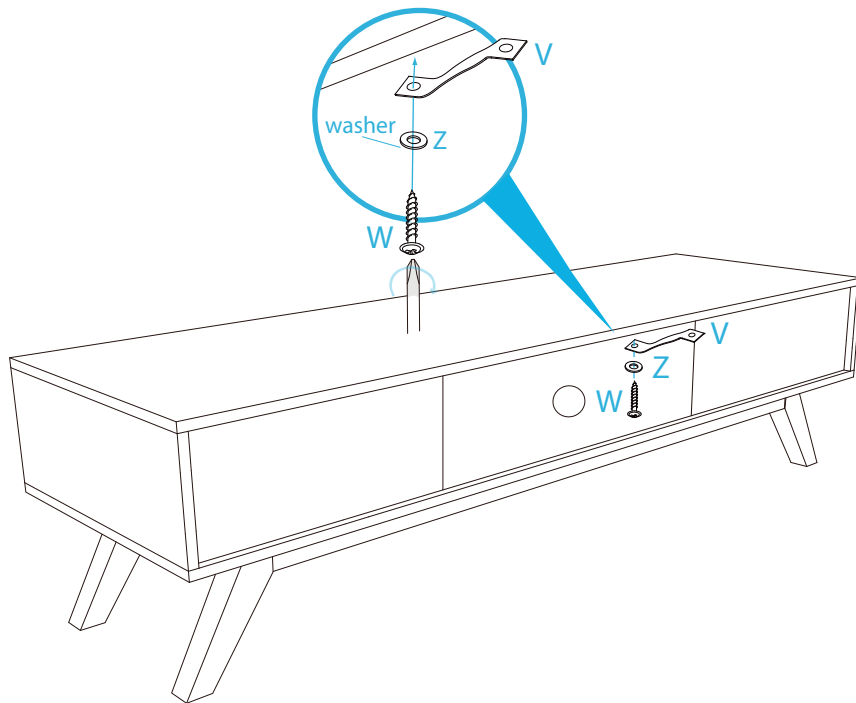
Finally ensure all drawers easily slide open and closed. Please extend the feet on the 2x central legs before first use.



# Jesse Entertainment Unit

## Assembly Instructions

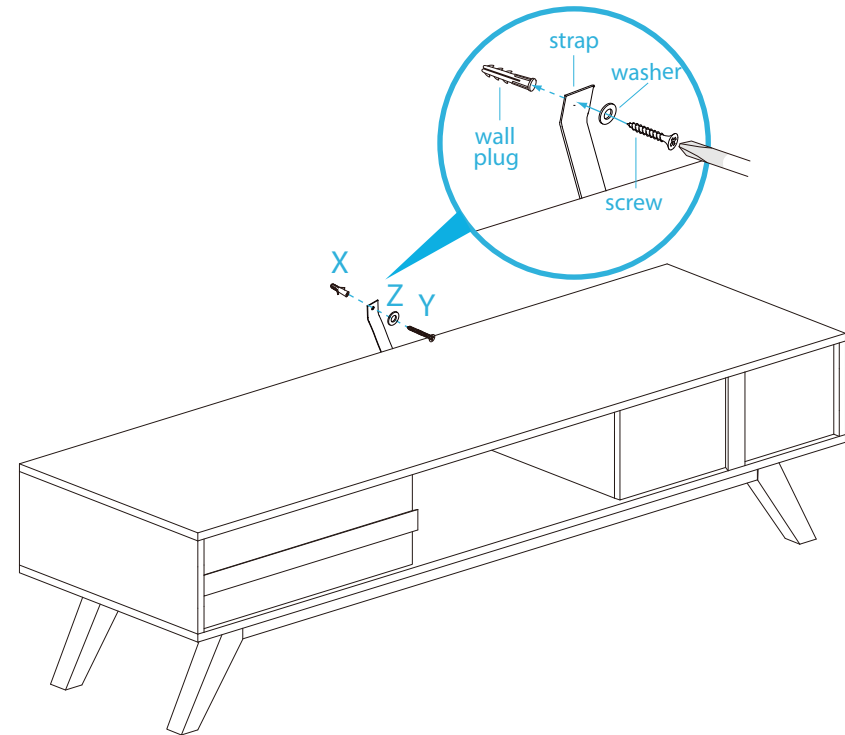
### 15 Wall Mount



Once assembled lift furniture into place, do not drag. Attach 1x safety strap (V) to the top of the back side of the unit using 1x washer (Z) and 1x screw (W). Tighten with a screwdriver.

mocka

### 16



Move the unit into the desired location up against a wall. Use a drill to create a small hole lining up with the top of the safety strap (V). Fasten to wall using 1x wall plug (X), 1x washer (Z) and 1x wall screw (Y). Ensure unit is balanced and steady before use. You're done, enjoy!